

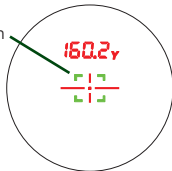
# GL04 OPERATION MANUAL

After startup, the power will turn off if you do nothing for about 10 seconds.

## Distance measurement in normal mode

1. Turn on the power and aim the crosshairs at the target.
2. Short press the power button.
3. The lock icon will be displayed. Then, the device will vibrate and the distance to the target will be displayed.

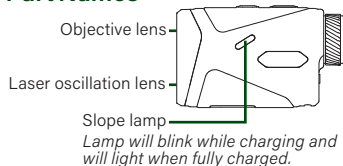
Lock icon



## Distance measurement in scan mode

1. Turn on the power.
2. While in normal mode, press and hold the power button and scan the target continuously with the crosshair.
3. Distance to the closest target is displayed.

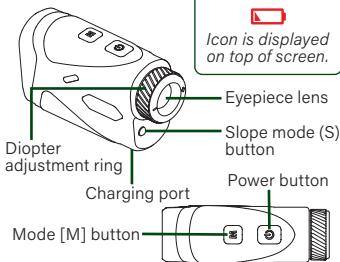
## Part Names



### Low Battery Icon



Icon is displayed on top of screen.



## Pin search mode

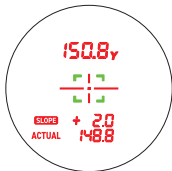
1. Turn on the power and short press the mode button. The device will switch to pin search mode and a "pin" icon will be displayed on the screen.
2. Aim at the pin. Then, press the power button and trace the pin with the crosshair.
3. The lock icon will be displayed; the device will vibrate and display the distance to the target.



## Setup

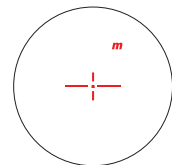
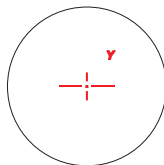
### Slope mode

1. Turn on the power and press the slope mode (S) button.
2. The Slope mode is turned on and the slope lamp turns on.
3. The slope adjusted distance (top), height difference (SLOPE), and the straight line distance (ACTUAL) will be displayed.
4. Press the slope mode (S) button again to turn the slope mode off.



## Switching between distance units

Press and hold the mode button for 3 seconds to switch the distance unit to yards (Y) or meters (M).



## Adjusting the display brightness

You can adjust the display brightness to one of 5 levels by holding down the power button while pressing the mode button. The following will appear on the the screen.

