

GPS Voice Coach Support Tool Manual

1. Support tool can do following functions

- 1.Function setup of Voice coach
- 2.Download running log data
- 3.Delete running log data
- 4.Update firmware

2. Operation environment the support tool

- OS: Microsoft Windows 7/8, 8.1/10 US version
(Not support mac OS)
- CPU: Celeron 2GHz and above
- Memory: 1 GB and above
- HDD: Space area of 100MB and above

3.How to install the support tool

- 1.Download "G011U_Installer_V1.00.zip" from HP of GPS Voice coach
(URL <https://www.greenon.jp/running/english>)
- 2.Unpack downloaded file.
The unpacked file has two files in "G011U_installer_V1.xx" folder.
- 3.Install the support tool
Open "G011U_installer_V1.xx" folder.
Click "setup.exe"
Then the installation start.
The installation does the support tool and the device driver.
After installation, reboot the PC.

4.How to use support tool

- 1)Start up
 - i. Connect the voice coach to PC
 - ii.Click "GPS Voice Coach Support Tool" shortcut icon.



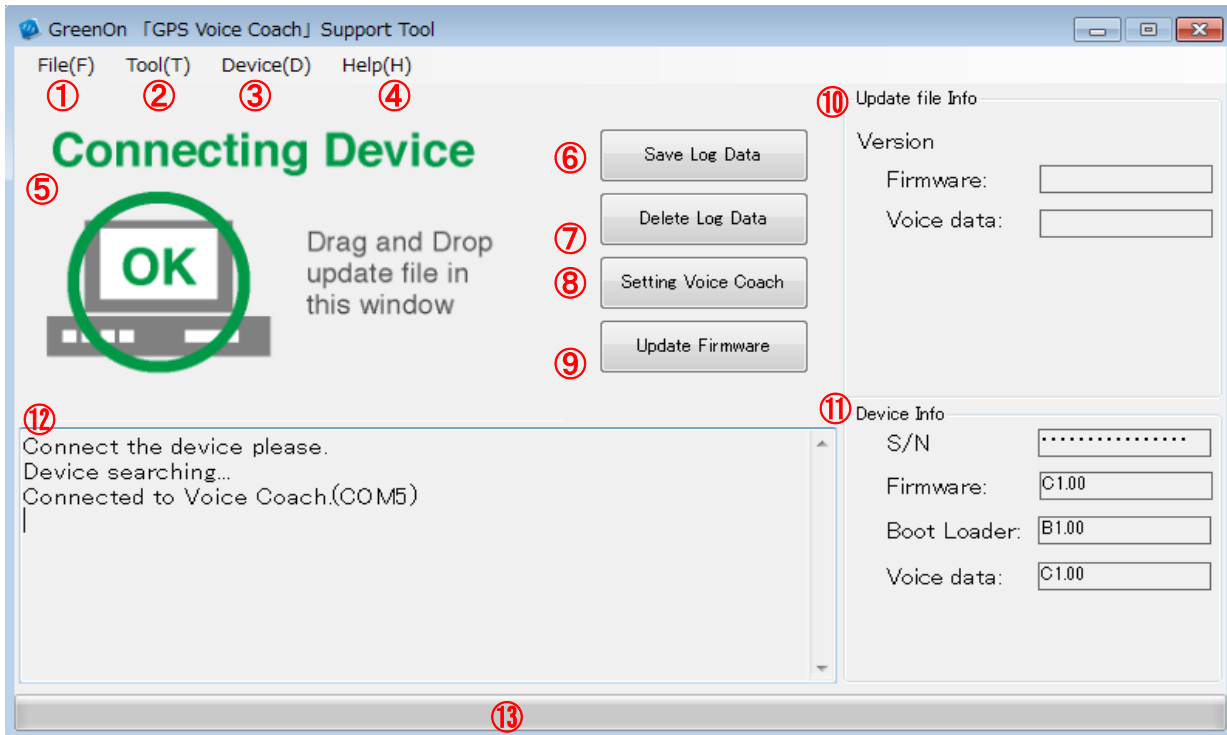
Then the tool window displays as follows.



If the device does not connect to PC well, the tool displays "unconnected Device".
 In this case, please try to connect device correctly again.



2)The function table of the tool



Number	Name	Function	Function explanation
①	File(F)	Save Log Data	It saves log data to local folder. (¥Documents¥VoiceCoach_Workspace¥Log¥common)
		Delete Log Data	It deletes all recording log data of device.
		Exit	It terminates tool.
②	Tool(T)	Open Log Data folder	It opens the folder of saved log data.
		Setting	it selects tool languages English or Japanese.
③	Device(D)	Setting Voice Coach	It opens device setting window.
		Update Farmware	It updates the firmware of device.
④	Help(H)	Ver info	It shows support tool version.
⑤		Device connection status	It shows the status of device and PC.
⑥	Save Log Data		It saves log data to local folder. (¥Documents¥VoiceCoach_Workspace¥Log¥common)
⑦	Delete Log Data		It deletes all recording log data of device.
⑧	Setting Voice Coach		It opens device setting window.
⑨	Update Farmware		It updates the firmware of device.
⑩	Update file info		It shows the information of file to update.
⑪	Device info		It shows the installed information into a device.
⑫		Message window	It shows the progress message.
⑬		Progress bar	It shows the prgress state by bar indication.

3)How to Voice coach setup

It select "Setting Voice Coach" to set device at above main screen.

Then setting screen is showed as follows.

Number	Item	Setup parameter	Default	Function explanation
⑭	Basic setting (Weight)	10~200lb	60	It sets weight.
⑮	Audio setting (Auto pause)	ON/OFF	OFF	When running speed is less than 1km/h, the measurement is stopped. If the running speed is more than 1km/h, the measurement is restarted.
	(Pace Announce)	ON/OFF	ON	It announces the pace at every 0.25mi.
	(Pace Alarm)	ON/OFF	OFF	It warns at alarm if a pace become lower or higher than set parameter.
⑯	Feedback Items (Lap Announce)	Per 1mi/0.5mi/OFF	1mi	It informs feedback items by a sound at every set distance.
⑰	Distance Feedback Items (Lap Announce Items)		* items	Distance*, Split Time*, lap Time*, pace, Calories, Average Pace
⑱	Power Off Feedback Items (Power Off Announce Items)		* items	Distance*, Split Time*, Average pace*, Calories*, Monthly Accumulated Distance, Max Pace, Min Pace
⑲	Button Feedback Items (Optional Announce Items)		* items	Distance*, Split Time*, Pace*, Calories, Average Pace
⑳	Metronome Setting (Continue)	ON/OFF	OFF	"ON" is continuation. "OFF" repeats sound for 20 sec and stop for 1 min.
	(Frequency)	50~250/min	120	It sets metronome frequency of every 1 min.
㉑	OK (Determination)			It determines setting.
㉒	Cancel (Cancel)			It cancels setting.